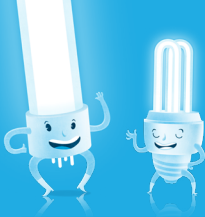


RECYCLE FLUORESCENT, CFL & HID LIGHTS AT NO CHARGE THROUGHOUT WASHINGTON STATE



Visit LightRecycle.org to find a convenient collection site near you.



What types of lights are Accepted?

Fluorescent Light Tubes (straight or curved), Compact Fluorescent Lights (CFLs) and High Intensity Discharge Lights (HIDs).

How many lights can I recycle?

Recycle unlimited screw-base compact fluorescent lamps (CFLs), up to 15 pin-based or linear fluorescent lamps, and up to 2 high-intensity discharge (HID) lamps per day at no charge.

Where can I drop off my lights?

Visit LightRecycle.org to locate a convenient collection site near you.

Why recycle?

Washington State law makes it illegal to throw away mercury-containing lights in the garbage.



LightRecycle Washington is funded by an Environmental Handling Charge (EHC). An EHC of \$0.95 per light will be added to all mercury-containing lights sold at retail in Washington State.